

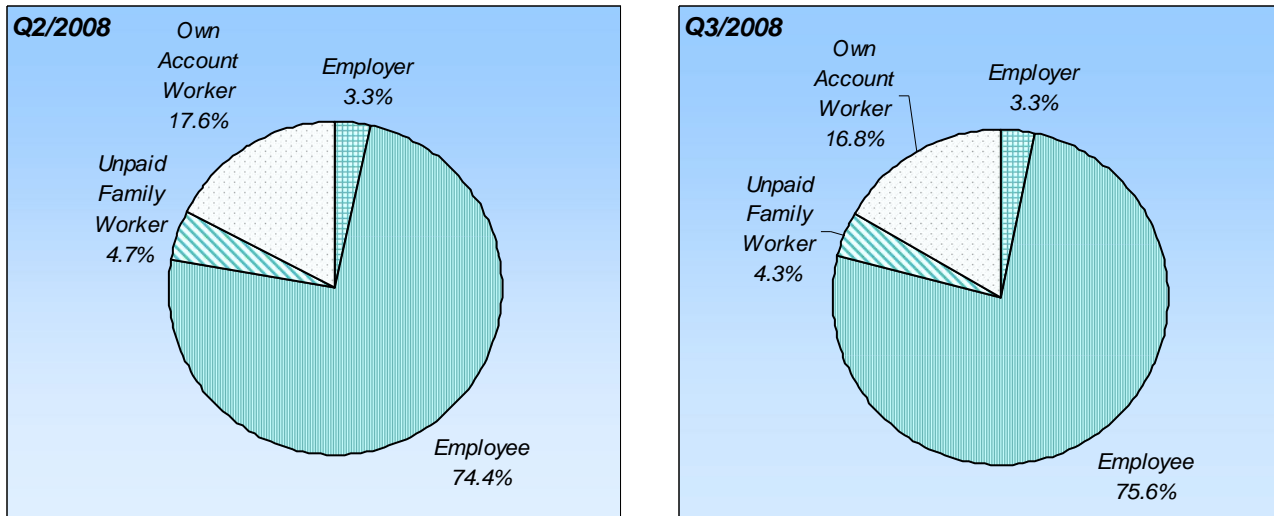
**Table 1: Overview of Malaysia labour force in year 2007.**

<b>CHARACTERISTICS</b>	<b>TOTAL</b>	<b>MALE</b>	<b>FEMALE</b>
<b>Population (million)</b>	<b>27.1</b>	<b>13.3</b>	<b>12.8</b>
<b>Working age group ('000)</b>	<b>17,219.6</b>	<b>8,757.9</b>	<b>8,461.7</b>
<b>Labour force ('000)</b>	<b>10,889.5</b>	<b>6,963.5</b>	<b>3,926.0</b>
Employed persons ('000)	<b>10,538.1</b>	<b>6,747.1</b>	<b>3,791.0</b>
Number of unemployed ('000)	<b>351.4</b>	<b>216.4</b>	<b>135.0</b>
<b>Outside labour force ('000)</b>	<b>6,330.1</b>	<b>1,798.4</b>	<b>4,535.7</b>
<b>Labour force participation rates (%)</b>	<b>63.2</b>	<b>79.5</b>	<b>46.4</b>
<b>Unemployment rates (%)</b>	<b>3.2</b>	<b>3.1</b>	<b>3.4</b>
<b>Employment characteristics ('000)</b>			
<b>Stratum</b>	<b>10,538.1</b>	<b>6,747.1</b>	<b>3,791.0</b>
Urban	7,102.0	4,422.4	2,679.7
Rural	3,436.1	2,324.7	1,111.4
<b>Age group</b>	<b>10,538.1</b>	<b>6,747.1</b>	<b>3,791.0</b>
15 - 19	397.7	252.4	145.3
20 - 29	3,203.2	1,907.6	1,295.4
30 - 39	2,953.5	1,880.9	1,072.6
40 - 49	2,405.0	1,590.2	814.7
50 and Above	1,578.7	1,115.9	462.9
<b>Marital status</b>	<b>10,538.1</b>	<b>6,747.1</b>	<b>3,791.0</b>
Never married	3,526.9	2,221.1	1,305.8
Married	6,648.0	4,426.4	2,221.6
Widowed	210.6	52.6	158.1
Divorced / separated	152.6	47.1	105.6
<b>Educational attainment</b>	<b>10,538.1</b>	<b>6,747.1</b>	<b>3,791.0</b>
No formal education	424.8	216.8	208.0
Primary	2,064.9	1,402.2	662.7
Secondary	5,917.4	3,970.2	1,947.2
Tertiary	2,121.9	1,152.5	969.4

**Note : Marital status and educational attainment totals include "unknown" category.**

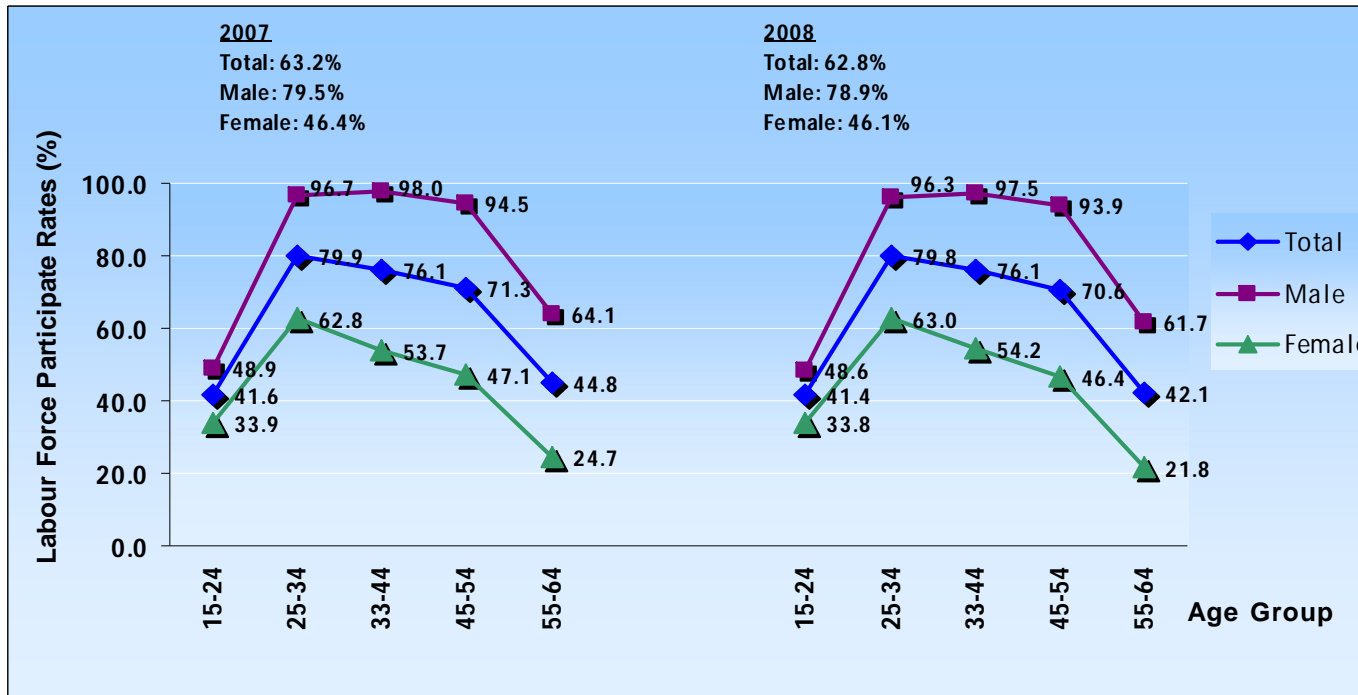
- In year 2007, the unemployment rate is 3.2% out of total of labour forces.
- The unemployment rate among female labour force is higher compared to male labour force.
- Between, the table shows that age 20-29 contributes the highest number of labour force whereas teenage age 15-19 only contributes 3.8% of labour forces. This is because mostly people from age group of 15-19 are students who may not be able to start working.
- Other than the fact age, the table shows that most of the workers have achieve at least secondary educational attainment.

**Chart 1: Percentage distribution of employed persons by employment status, Malaysia, Q2/2008 and Q3/2008.**



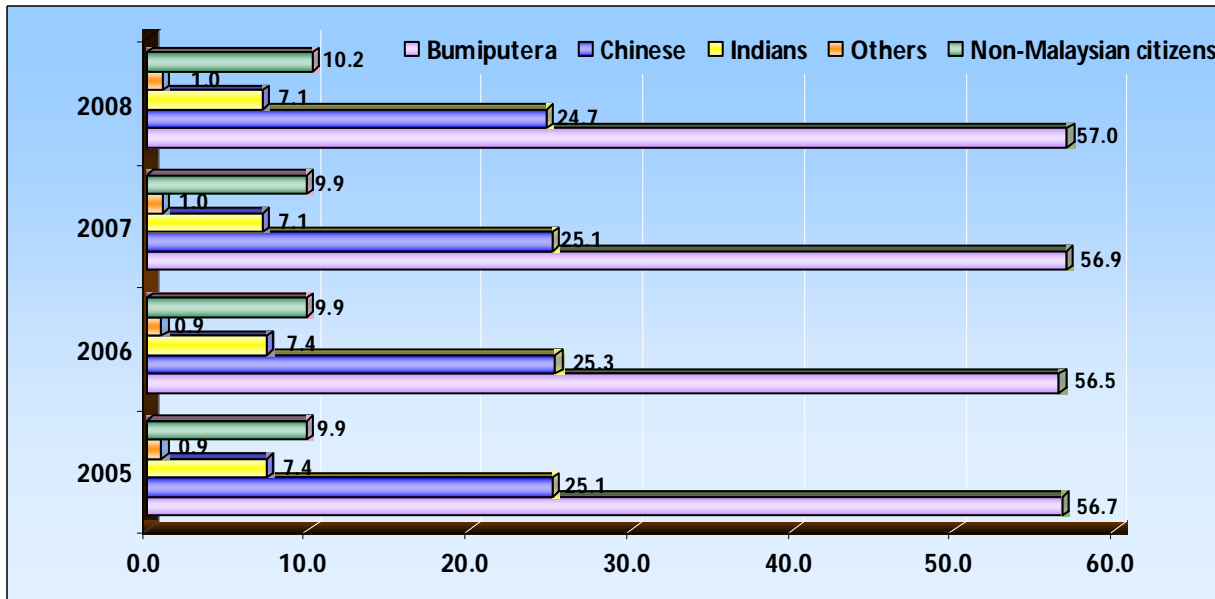
- Almost three quarter of the employed population were in the employee category and its proportion increased from 74.4 per cent in the second quarter of 2008 to 75.6 per cent in the third quarter of 2008.
- However, the percentages of employed persons in the employer, own account worker and unpaid family worker categories declined.

**Chart 2: Labour force participation rates by sex and age group, Malaysia, 2007 and 2008.**



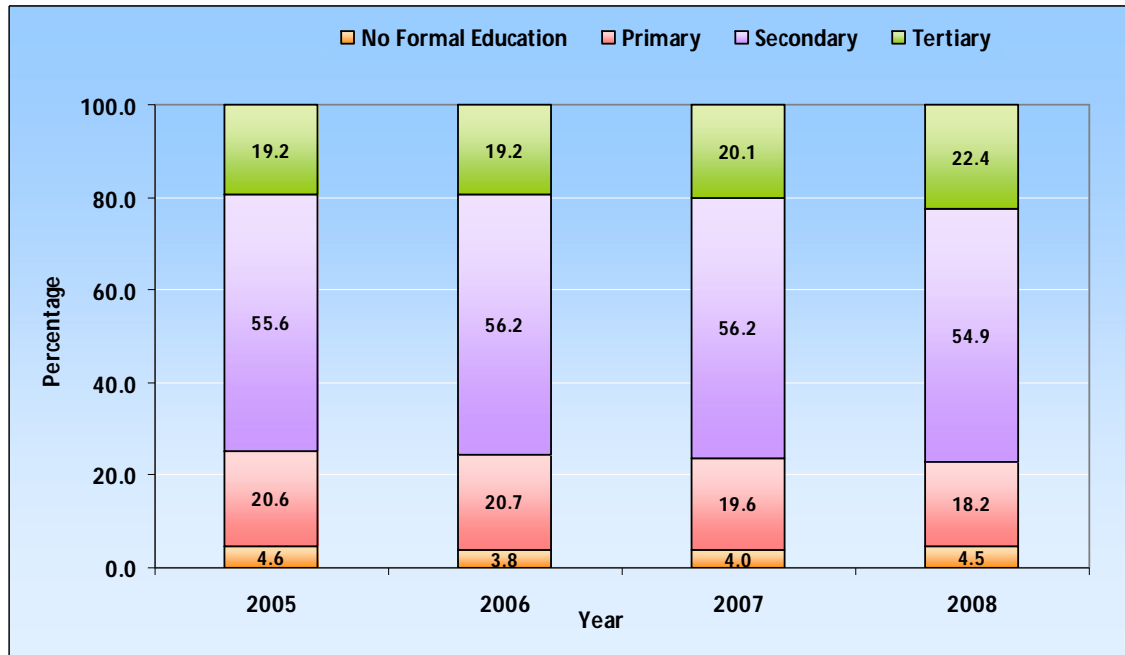
- In 2007 and 2008, labour force participate rates for males was higher than females in every age group.
- For both years, labour force participate rates for males was highest at 98 per cent in the age group 35-44 years while labour force participate rates for females was highest in the age group 25-34 years.

Chart 3: Percentage distribution of labour force ethnic group, Malaysia, 2005 – 2008



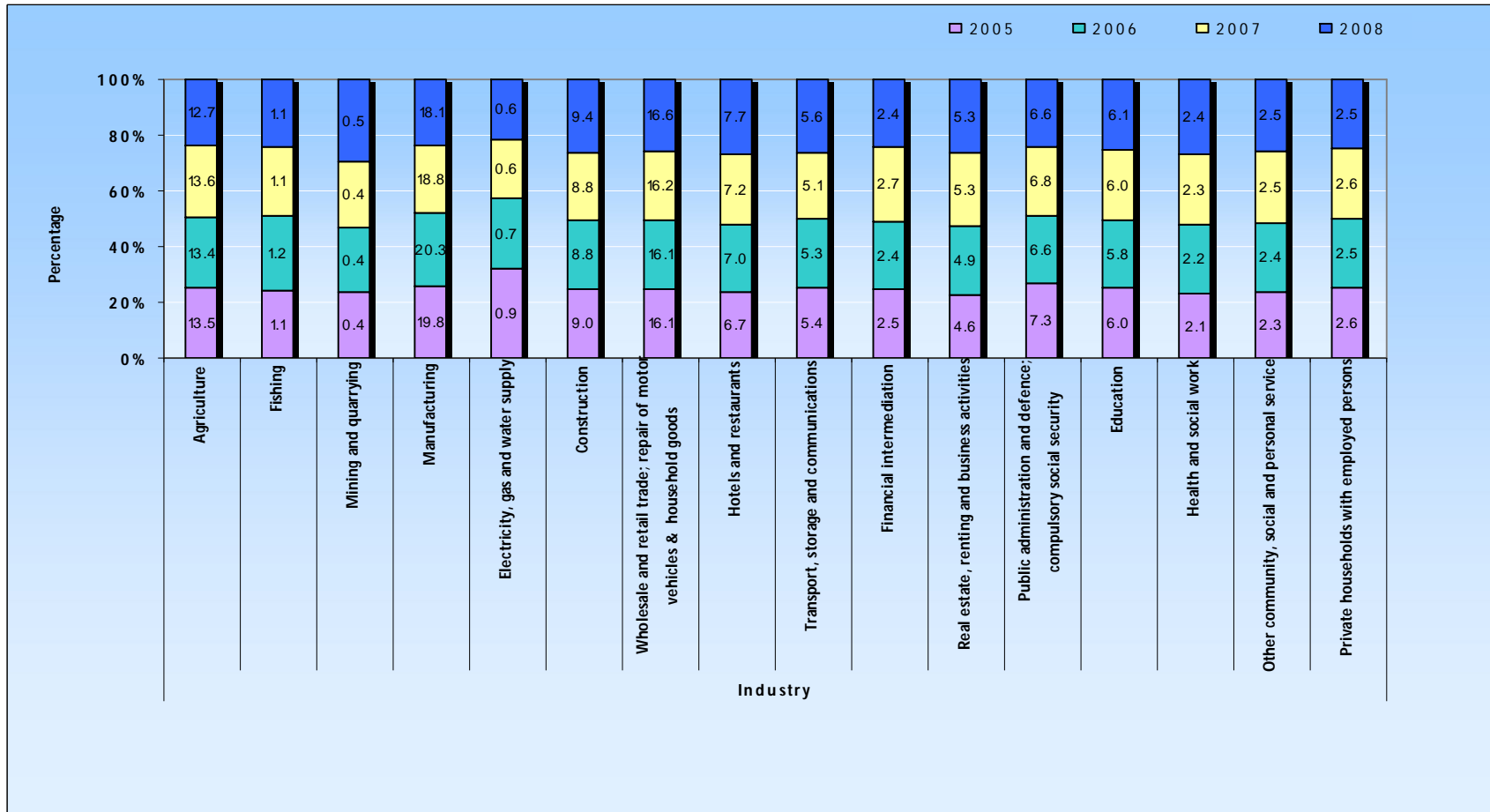
- Bumiputera has contributed the highest number of labour force among Malaysia citizens from year 2005-2008.
- From year 2005 to 2007, the percentage of employed non-Malaysian citizens remained unchanged, 9.9 per cent respectively.

**Chart 4: Percentage distribution of labour force by educational attainment, Malaysia, 2005 – 2008**



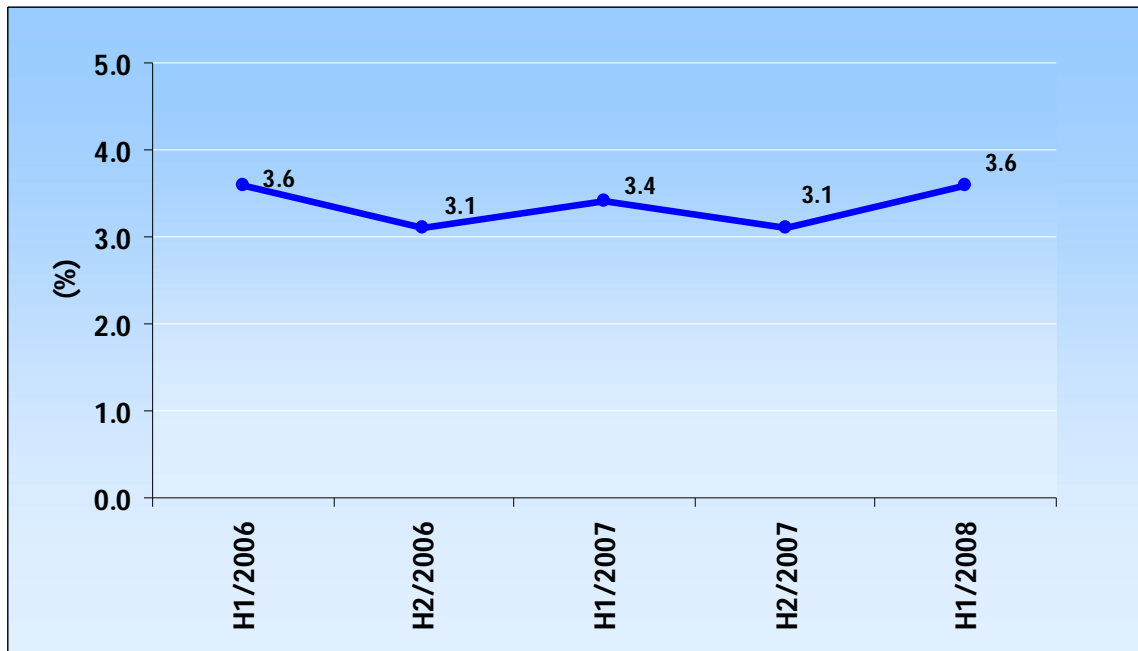
- More than half of employed persons were made up of those who were secondary educated.
- The percentage of employed persons with tertiary education increased from 19.2 per cent in 2006 to 22.4 per cent in 2008.
- As a result, employed persons with primary education experienced a decrease from 20.7 per cent in 2006 to 18.2 per cent in 2008.

Chart 5: Percentage distribution of employed persons by industry, Malaysia, 2005 – 2008



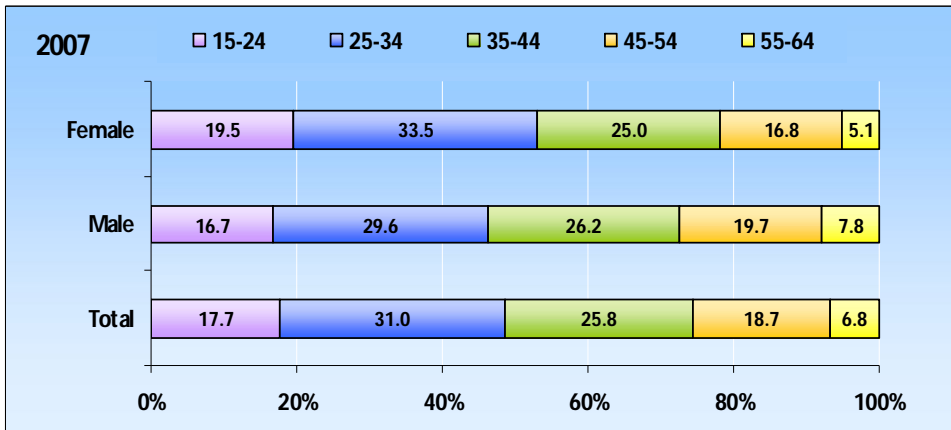
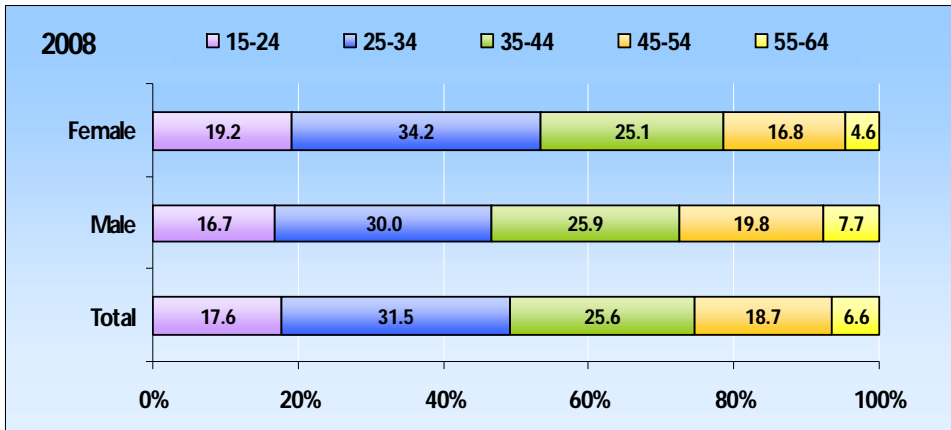
- Almost three quarter of the employed population were in the employee category and its proportion increased from 74.4 per cent in the second quarter of 2008 to 75.6 per cent in the third quarter of 2008.
- However, the percentages of employed persons in the employer, own account worker and unpaid family worker categories declined.

**Chart 6: Unemployment rates, H1/2006 - H1/2008**



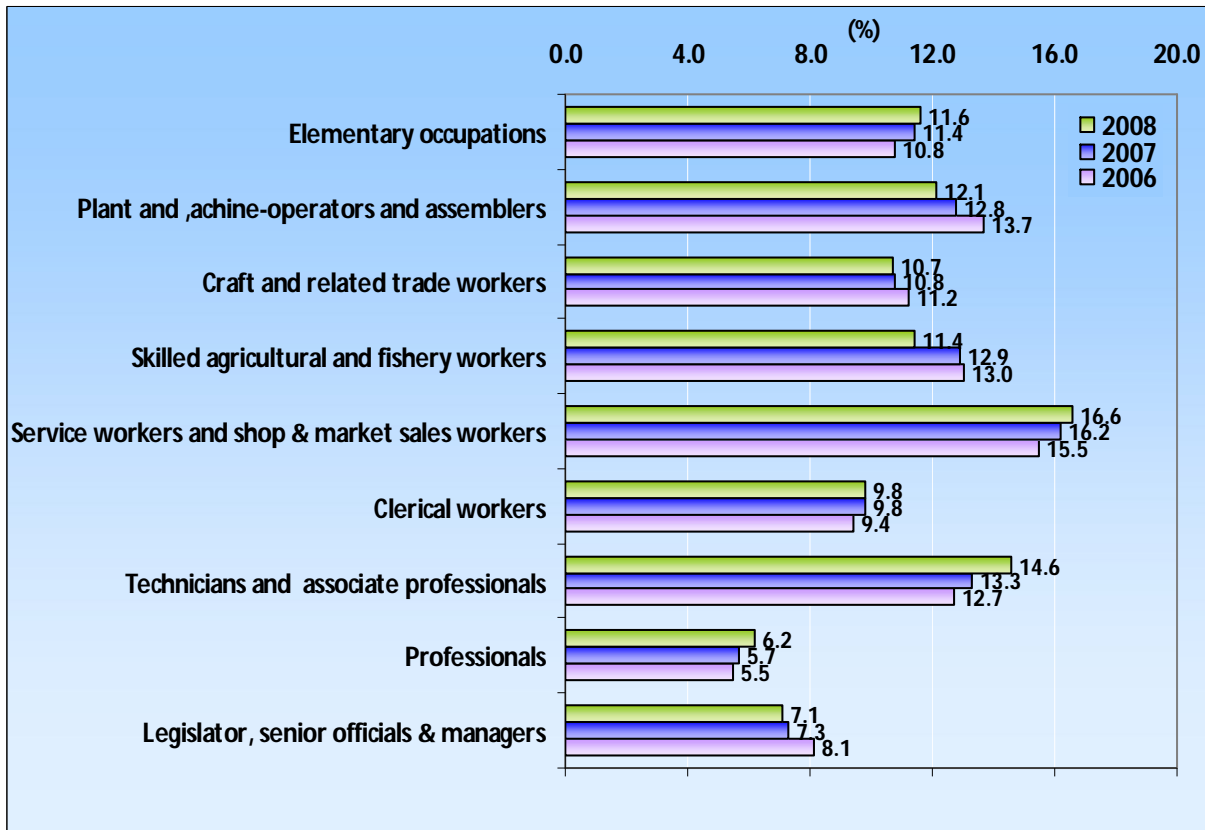
- The unemployment rates increased from 3.1 per cent in H2/2007 to 3.6 per cent in H1/2008.
- The increase of unemployment rates was due to increase 52,300 number of unemployed person and decrease 10,700 of labour force.

**Chart 7: Percentage distribution of employed persons by sex and age group, Malaysia, 2007 and 2008.**



- In 2008, 57.1% of those employed was between 25 to 44 years. The percentage was higher compared with 56.8% recorded in the previous year.
- Distribution by sex shows that majority of the employed males and females were in the 25 to 44 age group.

**Chart 8: Percentage distribution of employed persons by occupation, Malaysia, 2006 - 2008**



- Majority of the employed persons were service workers and shop and market sales workers and the percentage has increased from year to year.
- Similar trend can be observed for professionals, technicians and associate professionals and elementary occupations categories.